

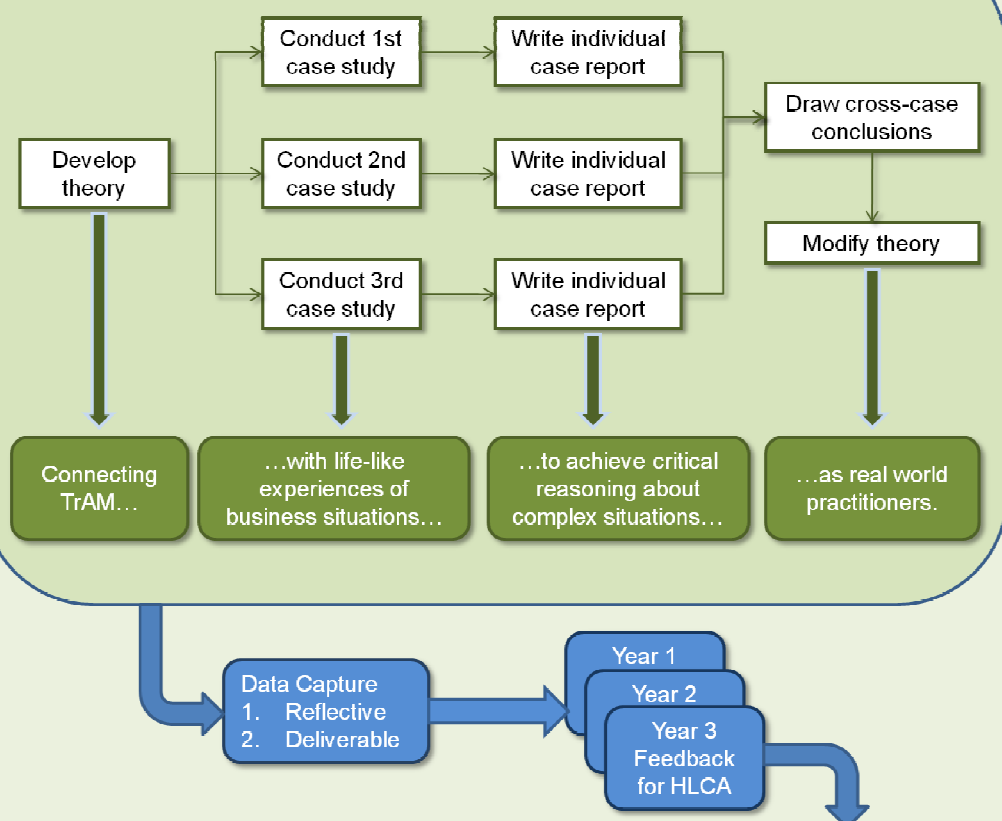
Practising Life-Like Case Studies through HLCA

Simon Polovina, Ivan Launders, & Simon Andrews (Dept. of Computing, ACES)

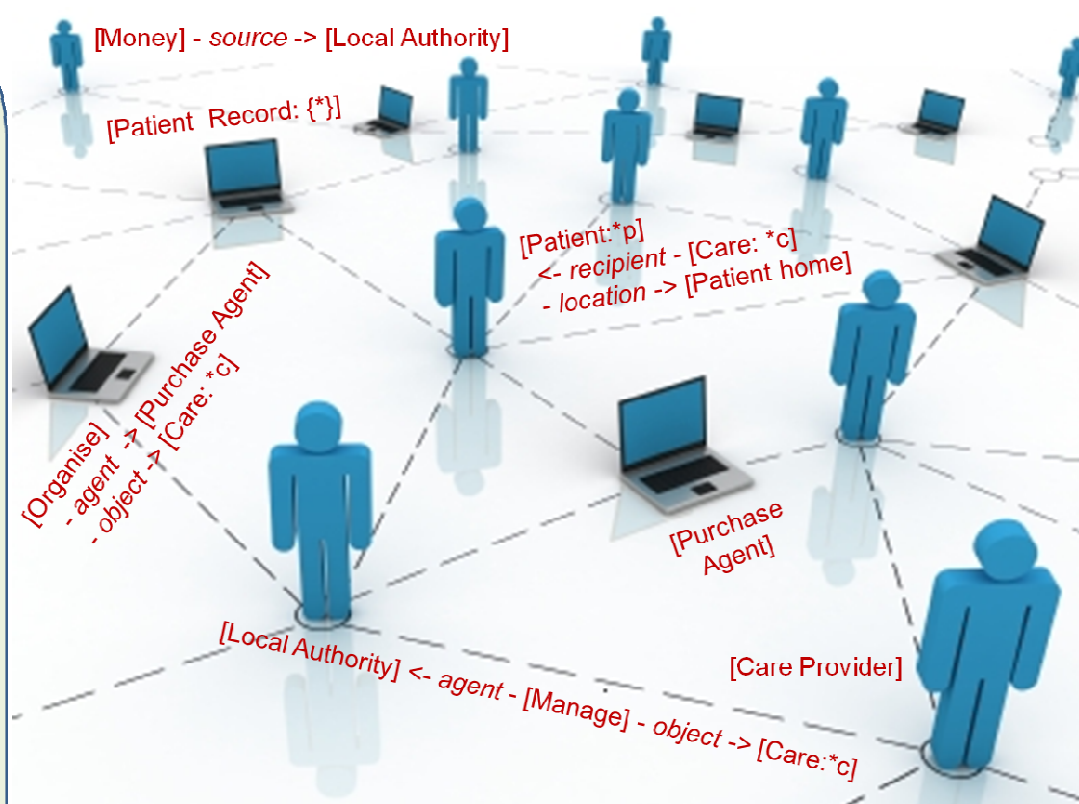


We appropriated Yin and HLCA...

After Yin's (2003) multiple case study method



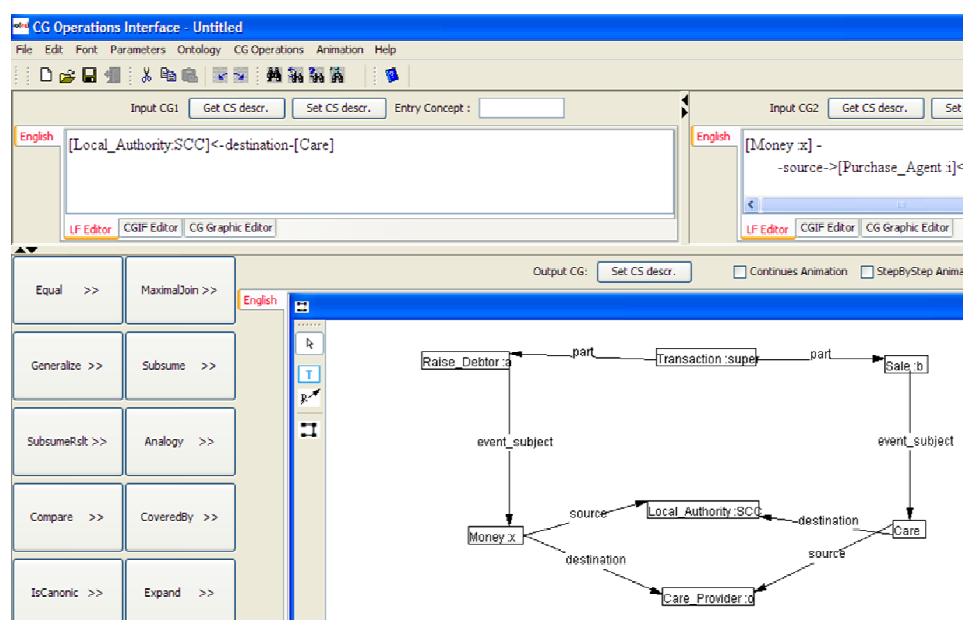
“...with a theoretical framework called ‘Transaction Agent Modelling’ (TrAM)...”



Results showed that through the case studies and TrAM the student design groups were actively engaged in applying reasoning and this theoretical framework to different settings. Industrial TrAM practitioners would draw on a similar stock of knowledge derived from previous examples of cases congruent with a reflective practitioner (Schon 1983). Students' reflections:

- ⇒ “Models may be wrong as they don't accurately reflect reality as it really is”
- ⇒ “It is impossible to model the real world. Assumptions can be made but, real model parameters will also change sometimes in an unpredictable way”
- ⇒ “The purpose of the model is to maximise the usefulness”
- ⇒ “A model can be useful to help us see and make changes to the design”
- ⇒ “Models are better used as a guide for understanding an enterprise”

...and a software tool that explores the issues...



...to highlight how “All Models are Wrong, but Some are Useful” (Box, 1979; Sowa, 2000)

